

Name

Date

BASICS OF GEOGRAPHY: Water and Landforms
Viewer's Guide

DIRECTIONS: Review the following questions before watching the video, and be prepared to discuss the answers with the class after the video presentation. You may write your answers on this sheet.

1. What do we call the two sets of lines that geographers have created to help locate places on a map or globe?
2. What are the two lines that divide the earth into the Northern and Southern Hemispheres and the Eastern and Western Hemispheres?
3. What percentage of the earth's surface is covered by water?
4. Name all four oceans.
5. What percentage of the water found on the earth is fresh water?
6. What are the three stages of the water cycle?
7. Name all seven continents.
8. What are the four basic types of landforms found on the earth?
9. What name have geographers given to the movement of the continents over millions of years?
10. Where would you be more likely to find a large population center: on top of a high mountain, or on a coastal plain?

Name.

Date _

BASICS OF GEOGRAPHY: Water and Landforms
Vocabulary Exercise: Word Scramble

DIRECTIONS: Unscramble the sets of letters below to form ten familiar geography terms. The definitions at the bottom of the page might help you to unscramble the letters. The definitions are not necessarily in the correct order.

1. APM LCAES
2. PERHSIEMEH
3. GTOLUDENI
4. ERGEDE
5. OEQAUTR
6. RVAPANOETIO
7. HUSIMTS
8. LNAOVCO
9. CARIGEL
10. SERONOI

Definitions:

A unit of measurement for latitude and longitude.

A narrow strip of land connecting two larger areas of land.

The line dividing the earth into the Northern and Southern Hemispheres.

A stage of the water cycle.

The wearing away of the land.

An imaginary line that runs north and south.

One of the four basic landforms.

It tells you the relative size of a map or globe.

One effect of the movement of the earth's crust.

A large, moving sheet of ice.

Name.

Date .

BASICS OF GEOGRAPHY: Water and Landforms
Map Exercise: Using Maps and Globes

DIRECTIONS: Using the latitude and longitude coordinates provided, plot the approximate locations of the following cities on the accompanying map. Then answer the questions that follow.

	<u>Latitude</u>	<u>Longitude</u>
A. ANCHORAGE		61° 30'
	10" N	149° 50' 39" W
B. CAIRO	30° 2' 23" N	31° 15' 0" E
C. SYDNEY	33° 52' 46" S	151° 12' 8" E
D. BUENOS AIRES	34° 35' 59" S	58° 20' 27" W
E. LOS ANGELES	34° 3 ¹ 40" N	118° 17 38" W
F. MADRID	40° 24' 14" N	3° 41' 51" W
G. NEW DELHI	28° 38' 5" N	77° 12' 33" E
H. MOSCOW	55° 45' 27" N	37° 39' 12" E
I. NAIROBI	1° 15' 41" S	36° 49' 54" E
J. TOKYO	35° 40' 18" N	138° 45' 6" E

1. Which of these cities are located in the Southern Hemisphere?
2. Which of these cities are located in the Western Hemisphere?
3. Which city is located nearest the prime meridian?
4. Which city is located nearest the equator?
5. Which city is located directly east of Buenos Aires?
6. Which city is located south of Cairo?
7. What direction would you be going if you were traveling from Moscow to New Delhi?
8. What direction would you be going if you were traveling from Los Angeles to Anchorage?

Name.

Date

BASICS OF GEOGRAPHY: Water and Landforms
Map Exercise: Using Maps and Globes

DIRECTIONS: Using the latitude and longitude coordinates provided, plot the approximate locations of the following cities on the accompanying map. Then answer the questions that follow.

	<u>Latitude</u>	<u>Longitude</u>
A. ANCHORAGE	61° 30' 10" N	149° 50' 39" W
B. CAIRO	30° 2' 23" N	31° 15' 0" E
C. SYDNEY	33° 52' 46" S	151° 12' 8" E
D. BUENOS AIRES	34° 35' 59" S	58° 20' 27" W
E. LOS ANGELES	34° 3' 40" N	118° 17' 38" W
F. MADRID	40° 24' 14" N	3° 41' 51" W
G. NEW DELHI	28° 38' 5" N	77° 12' 33" E
H. MOSCOW	55° 45' 27" N	37° 39' 12" E
I. NAIROBI	1° 15' 41" S	36° 49' 54" E
J. TOKYO	35° 40' 18" N	138° 45' 6" E

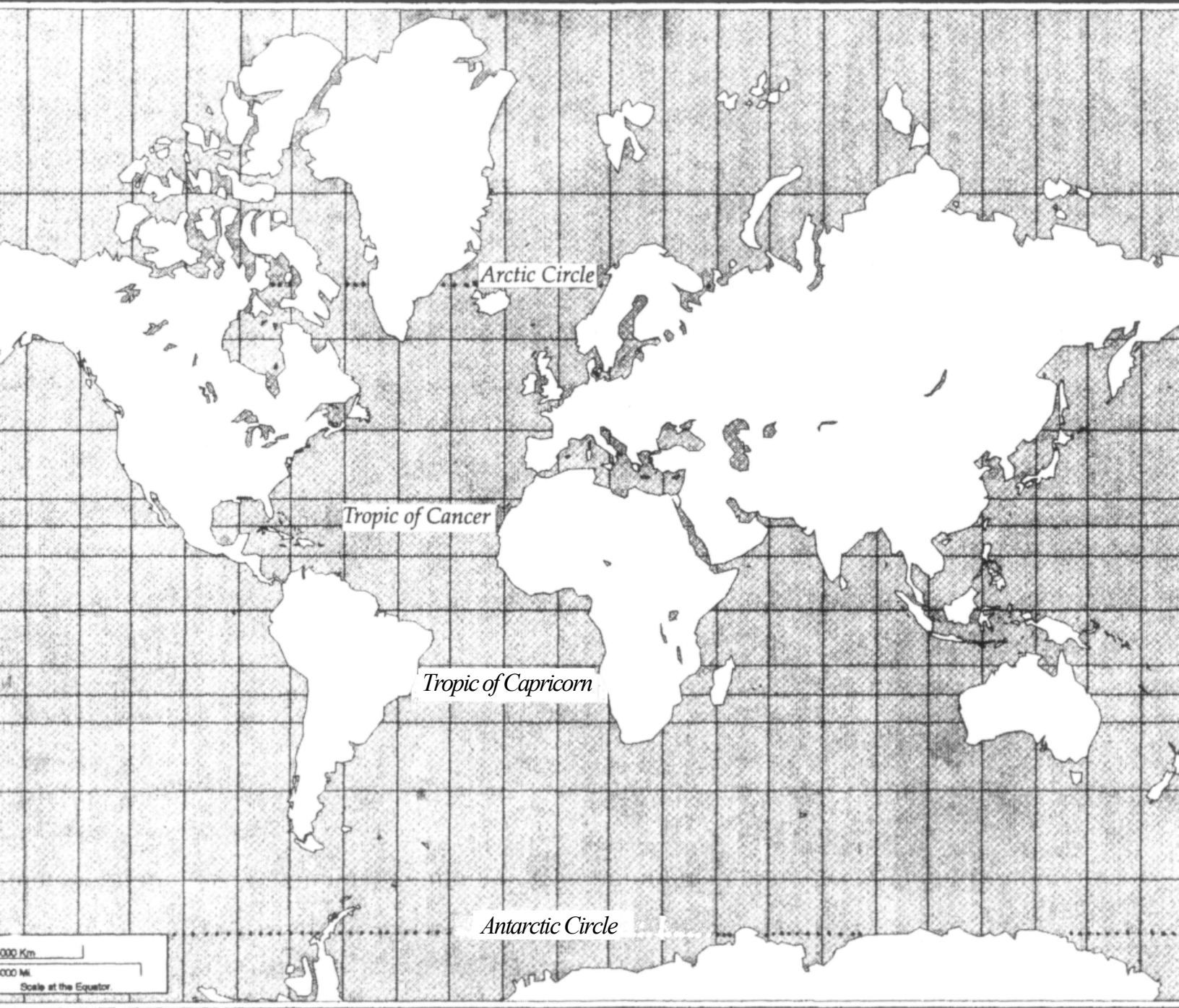
1. Which of these cities are located in the Southern Hemisphere?
2. Which of these cities are located in the Western Hemisphere?
3. Which city is located nearest the prime meridian?
4. Which city is located nearest the equator?
5. Which city is located directly east of Buenos Aires?
6. Which city is located south of Cairo?
7. What direction would you be going if you were traveling from Moscow to New Delhi?
8. What direction would you be going if you were traveling from Los Angeles to Anchorage?

BASICS OF GEOGRAPHY: Water and Landforms
Map Exercise: Using Maps and Globes

70

120

150



120

90

60

30

0

30

60

90

120

150

60

30

0

30

60

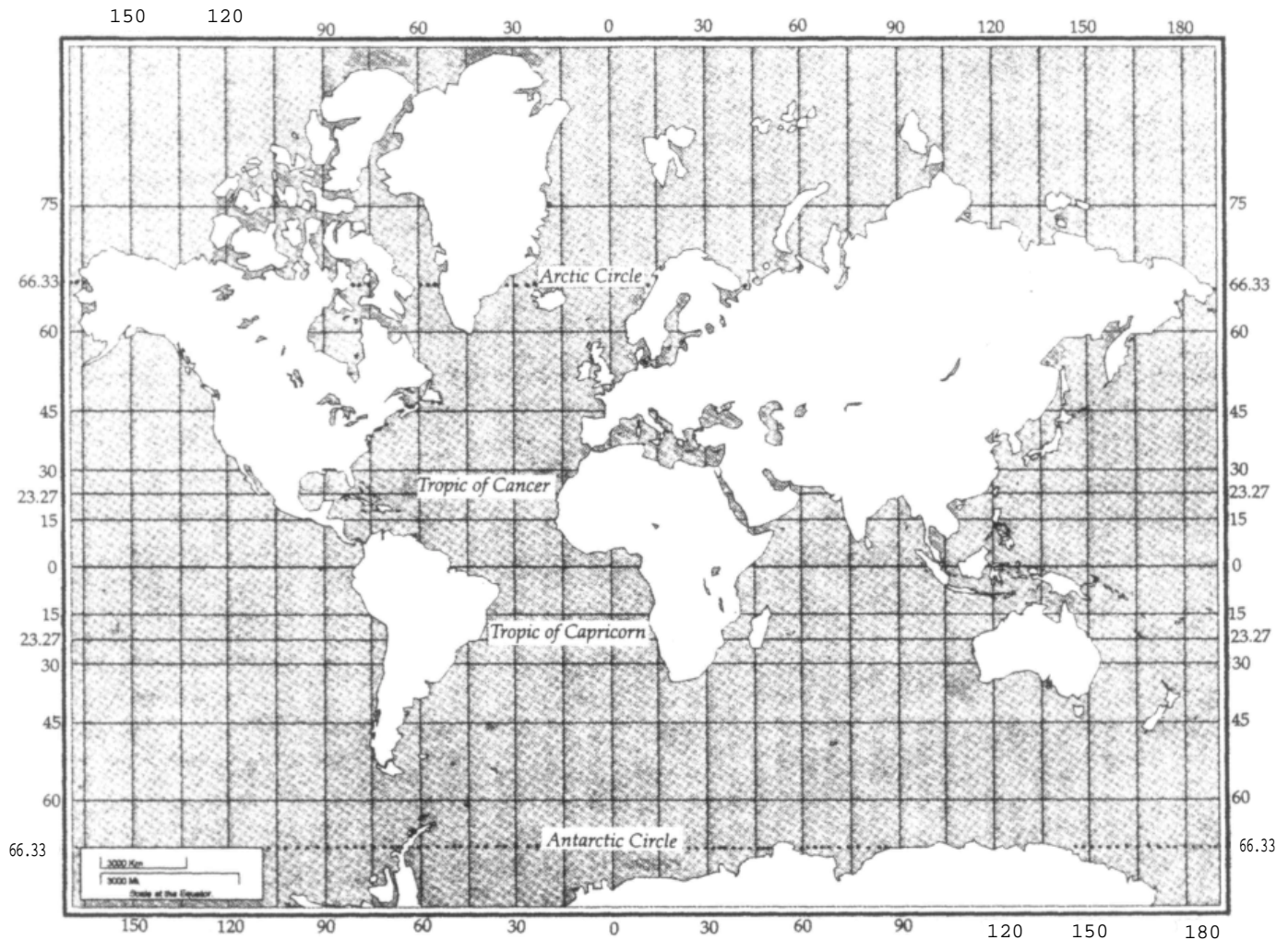
90

Name.

Date

BASICS OF GEOGRAPHY: Water and Landforms
Locating Oceans and Continents

DIRECTIONS: Label the map below with the four main oceans and the seven major continents. Then answer the questions that follow.



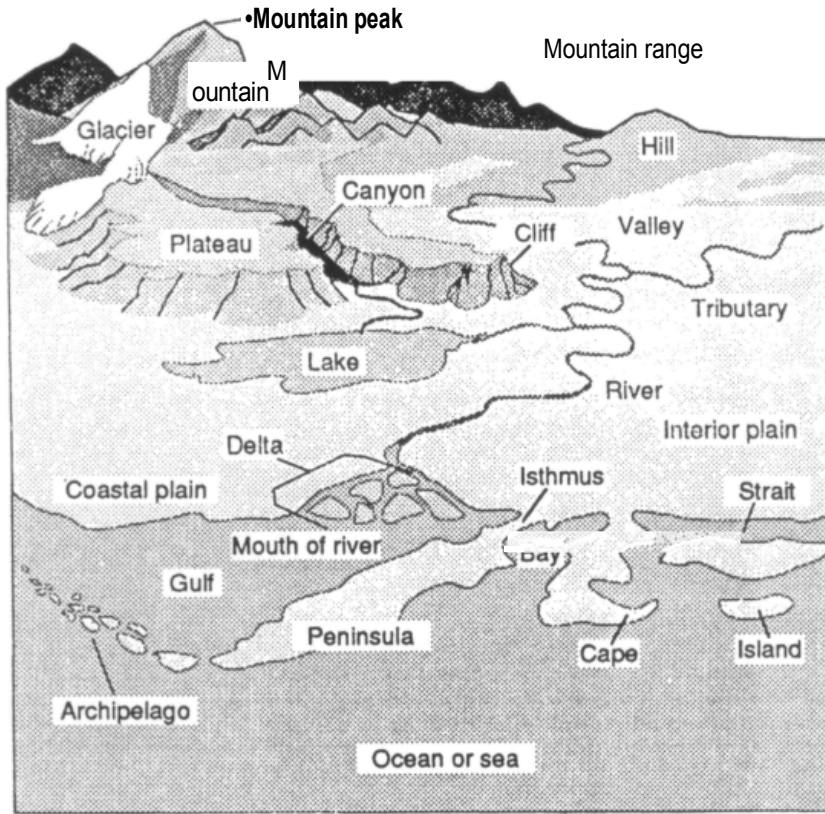
1. Which ocean lies entirely within the Northern Hemisphere?
2. Which ocean is located mainly in the Southern Hemisphere?
3. Which is larger, the Pacific Ocean or the Indian Ocean?
4. Which continents are located entirely within the Southern Hemisphere?
5. Which continents are located entirely within the Eastern Hemisphere?
6. Which continents border the Atlantic Ocean?
7. Through which continents does the equator pass?
8. Through which continents does the prime meridian pass?
9. Which is the smallest continent?
10. If Antarctica is only the fifth-largest continent, why does it appear to be so much larger on this map?

Name.

Date

BASICS OF GEOGRAPHY: Water and Landforms Identifying Landforms and Bodies of Water

DIRECTIONS: The drawing below illustrates some various landforms and bodies of water. Study this drawing and read each of the geographic descriptions that follow. Then write in the term that best matches each of the geographic descriptions. Not all terms will be used.



- 1. A deep narrow valley with steep sides.
- 2. A large group or chain of islands.
- 3. A row or chain of mountains.
- 4. Part of an ocean or sea that extends into the land, usually smaller than a gulf. . The place where a river empties into another body of water. . A projecting part of a coastline that extends

- 5. into an ocean or sea.
- 6. A narrow waterway or channel connecting two larger bodies of water. . Land
- 7. formed at the mouth of a river by deposits of sand, silt, and pebbles. . A river or
- 8. stream that flows into a larger river or stream.
- 9. Part of an ocean that extends into the land and is usually larger than a bay.

Distributed By United Learning, Inc.

Name.

Date

**BASICS OF GEOGRAPHY:Water and Landforms
Water, Landforms, and You**

DIRECTIONS: Describe some of the ways in which the water and landforms where you live affect your lifestyle. For example, you might want to discuss what effect the land and water have on the kind of recreational activities you enjoy, or perhaps what effect they have on the way you travel.

Name.

Date

BASICS OF GEOGRAPHY: Water and Landforms
Quiz

DIRECTIONS: Circle the letter next to the phrase that best completes the sentence.

1. Physical geography includes the study of: a) landforms b) bodies of water c) climate
d) natural resources e) all of the above

2. Historically, people settled near water for the following reasons: a) ease of transporting
goods b) energy source for mills c) water source for crops d) source of drinking water
e) all of the above.

DIRECTIONS: Write a "T" in front of true statements and an "F" in front of false statements.

3. _____ The ocean floor is mostly flat.

4. _____ Many mountains were formed by the movement of glaciers.

DIRECTIONS: Fill in the blank with the correct geography terms.

5. Lines of latitude and lines of longitude are measured in degrees. Degrees are further divided into
_____ and _____.

6. Northwest is one example of an _____ direction.

7. People can access one source of fresh water called _____ by digging wells.

8. Africa and Asia are connected by a narrow strip of land called the

9. The study of the forces within the earth that cause the earth's crust to move is called

10. The stages of the water cycle are and

Name.

Date

BASICS OF GEOGRAPHY: Water and Landforms
Water, Landforms, and You

DIRECTIONS: Describe some of the ways in which the water and landforms where you live affect your lifestyle. For example, you might want to discuss what effect the land and water have on the kind of recreational activities you enjoy, or perhaps what effect they have on the way you travel.